



MONTANA
— DECOY CO —

20 | HUNTER RESOURCE GUIDE
25 | TURKEY | WHITETAIL | PREDATOR | BIG GAME

Effective January 1, 2025

TABLE OF CONTENTS

TURKEYS	3
WHITETAIL	6
PREDATOR	9
BIG GAME	10
ACCESSORIES	14

ABOUT MONTANA DECOY

It's always been about building decoys that are realistic, lightweight and portable. Those three tenets apply to every decoy we have or will ever build.

REALISTIC Just like the animals they mimic and the hunters that use our decoys.

LIGHTWEIGHT Because if it's heavy you won't have it when you need it.

PORTABLE Has to be simple to carry and easy to set up.

Like a lot of great ideas, Montana Decoy was born from necessity and frustration. Necessity because every hunter needs more than one tool in their kit. Frustration from elk that would only come so far to just calling.

After days of not closing the deal and long walks back to his truck, our founder Jerry McPherson started thinking about how he had the audio side of the ruse down, but he just needed to show the elk the visual part to close the deal.

A band saw blade, a piece of fabric and some sketchy first effort printing resulted in the first decoy success. Soon his buddies wanted one, and his buddy's buddies. The next thing you know Jerry has left the mine to run a decoy business, helping hunters across the country find more success.

For over 25 years he's been designing new decoys and constantly tweaking current models to make them even better.



TURKEYS

Realistic setups and the ability to move quickly and quietly are crucial for most successful turkey hunts. Montana's line of 2-D and 3-D models offer you the versatility and realism for any hunting style.

WILEY TOM 3D

The Ultimate Full Strut Gobbler Decoy

Wiley Tom 3D is the ultimate hybrid strutter decoy. It's two-piece design consists of an ultralight photo-realistic 2D strutting tom, along with a 3D body and head that quick-attach for 3D realism. Go ultralight 2D for long hikes or reaping. Add the 3D body for more realism and it's still lighter and more packable than competitors.

- Half the weight of competitor strutting tom decoys
- Hi-resolution, photographic realism
- Collapsible - folds up for transport in a vest. No bulk.
- Easily add real tail and wing feathers for additional texture and detail
- Versatile stake design for traditional set ups or reaping
- Weight
 - » 2D strutting tom: 1 lb 14 oz
 - » 3D body and head: 1 lb 3 oz
 - » Total: 3 lbs 1 oz



Wiley Tom's realistic 3-D head with taxidermy-like eyes

PART#	UPC
0044	851234000447

WEIGHT: 3 lbs 1 oz

UNFOLDED: 30" w x 12" d x 33" h

FOLDED: 19" x 13" x 5"



FEEDER



BREEDER



MISS PURR-FECT XD 3D

PART#	UPC
0084	851234000843

WEIGHT: 22 oz (with pole)

UNFOLDED: 9" x 34"

FOLDED: 9" x 3"

NEW! Portable carry bag for fast collapsing and easy travel



UPRIGHT



BRAWLER

JAKE PURR-FECT XD 3D

PART#	UPC
0085	851234000850

WEIGHT: 22 oz (with pole)

UNFOLDED: 9" x 34"

FOLDED: 9" x 3"

NEW! Portable carry bag for fast collapsing and easy travel



PURR-FECT PAIR XD 3D

PART#	UPC
0086	851234000867

WEIGHT: 43 oz

UNFOLDED: 9" x 34" (2)

FOLDED: 9" x 3" (2)



XD DECOYS

Xtra detail where you need it most

- Improved printing process with enhanced color and details to model a wild turkey's natural iridescence
- Realistic taxidermy eyes for those last few steps
- PERFECT POSE technology allows for multiple head and neck positions

Available on all Purr-fect Decoy models





FANATIC

The Fanatic's life-like size and photographic realism is sure to rile up any gobbler that sees it. With the attached stake, push it into the ground within seconds for a quick setup or use it to stalk a hung-up bird while peering through the mesh window.

- See-through mesh window for total concealment
- Sewn-in fold-able stake can be used as a handle

PART#	UPC
0058	851234000584

WEIGHT: 12 oz

UNFOLDED: 29" x 29"

FOLDED: 11" x 11"



SPRING FLING

The Spring Fling utilizes a photo taken of a hen just before she was bred - a suggestive pose that no tom can turn down.

- Built using an actual photo of a live, ready-to-breed hen
- Allows more mobility and sets up in seconds

PART#	UPC
0042	851234000423

WEIGHT: 8 oz (with pole)

UNFOLDED: 31" x 9"

FOLDED: 10" x 1"



DINNER BELLE

The natural, reassuring feeding pose of the Dinner Belle adds confidence to incoming birds.

- Built from an actual photo of a wild turkey hen
- Works any time of year, anywhere in the country

PART#	UPC
0043	851234000430

WEIGHT: 8 oz

UNFOLDED: 29" x 10"

FOLDED: 9" x 1"



WHITETAIL & SIKA

From aggressive, posturing bucks to alluring estrus does, Montana has a realistic whitetail decoy to complete your field edge or food plot setup.



DREAM TEAM

The Dream Team has been a staple in our decoy line up but it was time to give the Whitetail Buck a makeover. Better printing, improved detail and even easier folding means more successes in the field. Use it with or without the included Dreamy Doe for an all season all hunt deer decoy package.

- **NEW!** buck pose
- The total package for all-season hunting
- Multiple setup options

Use with or without the

**magnetic
TEASER
TAIL**

(not
included)



PART#	UPC
0030	851234000300

BUCK	WEIGHT: 32 oz (with poles)
	UNFOLDED: 37" x 42"
	FOLDED: 20" x 18"
DOE	WEIGHT: 30 oz (with poles)
	UNFOLDED: 37" x 40"
	FOLDED: 13" x 16"



DEER RUMP

The lightest and most packable deer decoy we've ever made... and that's saying something. Effective all season long.

- Includes two magnetic Teaser Tails for motion and extra realism

magnetic
TEASER TAIL

PART#	UPC
0069	851234000690

WEIGHT: 32 oz

UNFOLDED: 34" x 21"

FOLDED: 16" x 8"



"I've designed deer decoys for decades, and without a doubt this is the most effective deer decoy we've ever produced. The response from bucks and does of all ages in all states has been incredible."

— Jerry McPherson



Use with or
without the

magnetic
**TEASER
TAIL**



PART#	UPC
0053	851234000539

TRIXIE

The crew at Montana Decoy has built a lot of deer decoys over the years, but this one is special. From day one of prototyping, Trixie has fooled both does and bucks, young and old better than any other decoy we've ever produced. The combination of color, print quality and teaser tail give Trixie unmatched realism, while the natural pose calms and invites deer closer in a way no other decoy does. If you're only going to have one whitetail decoy from opening day to the last hour of your last hunt, Trixie is the one you need.

- Effective all season long
- Unique calming pose
- A great option for hunting in timber

WEIGHT: 34 oz (with poles)

UNFOLDED: 39" x 35"

FOLDED: 13" x 13"

ESTRUS BETTY



When rut is at full throttle, the squatting pose, raised tail and HD realism of Estrus Betty entices cruising bucks to come over and scent-check her.

- Works during all phases of the rut
- Increases the effectiveness of calls and scents

PART#	UPC
0045	851234000454

WEIGHT: 33 oz (with pole)

UNFOLDED: 43" x 46"

FOLDED: 13" x 10"

THE FRESHMAN BUCK



The Freshman mimics a small buck with a big attitude. When dominant bucks see the Freshman's aggressive posture, they'll run in to defend their turf.

- Fold up or set up in seconds
- Distracts a buck so you can take the shot

PART#	UPC
0046	851234000461

WEIGHT: 35 oz (with poles)

UNFOLDED: 37" x 48"

FOLDED: 20" x 13"

DREAMY DOE



The most versatile whitetail decoy we make and our number one seller. Dreamy has been proven across the whitetail's range.

- New wider leg pole sleeves for bedded position
- Use alone, with a buck or another doe decoy

PART#	UPC
0023	851234000232

WEIGHT: 30 oz (with poles)

UNFOLDED: 37" x 40"

FOLDED: 13" x 16"

SIKA DOE



Light and simple to use, Montana's Sika decoy is a first in the decoy world. Use it as a confidence decoy all season long or pair it with calling during the rut to create even more interest from rutting bucks.

- Lightweight and folds down to a 13 inch circle for pack-ability
- Foldable fiberglass leg poles with metal tips
- Adds the visual to give the confidence to roaming bucks

PART#	UPC
0087	851234000874

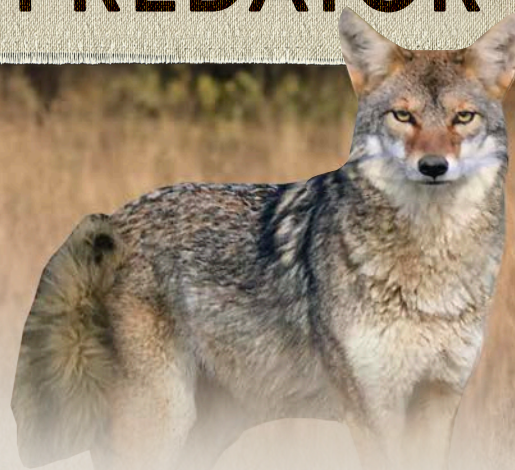
WEIGHT: 26 oz including leg poles

UNFOLDED: 42" x 45"

FOLDED: 10" x 13"



PREDATOR



SITTING COYOTE

Customers have been asking for a sitting pose and we are happy to deliver. The sitting coyote adds something new in your set up and entices wary coyotes to come closer. The calm sitting pose and forward looking implies curiosity and comfort. And of course like all Montana Decoys it's built off an actual picture of a coyote in the wild and easily folds for transport and fast set up.

PART#	UPC
0048	851234000485

WEIGHT: 13.5 oz

UNFOLDED: 31" x 16"

FOLDED: 9" x 10"



SONG DOG

Coyotes are not getting easy but a decoy can help even the odds....if that decoy has realism. Updating our printing process while utilizing a new image makes this the best coyote we've ever built.

- Life-like tail gives just the right hint of motion and increased realism

PART#	UPC
0079	851234000799

WEIGHT: 25 oz (with poles)

UNFOLDED: 23" x 31"

FOLDED: 9" x 9"



ANTELOPE FAWN

A fresh set up that your local predator population has never seen before, the Antelope Fawn can be your secret weapon. Effective anywhere antelope roam.

PART#	UPC
0080	851234000805

WEIGHT: 22.5 oz (with poles)

UNFOLDED: 31" x 28"

FOLDED: 10" x 10"



MISS HOPTOBER

A foolproof way to add realism to your calling setup, Miss Hoptober is a sneaky tool that can easily ride in your vest or pack all season.

PART#	UPC
0036	851234000362

WEIGHT: 7 oz (with poles)

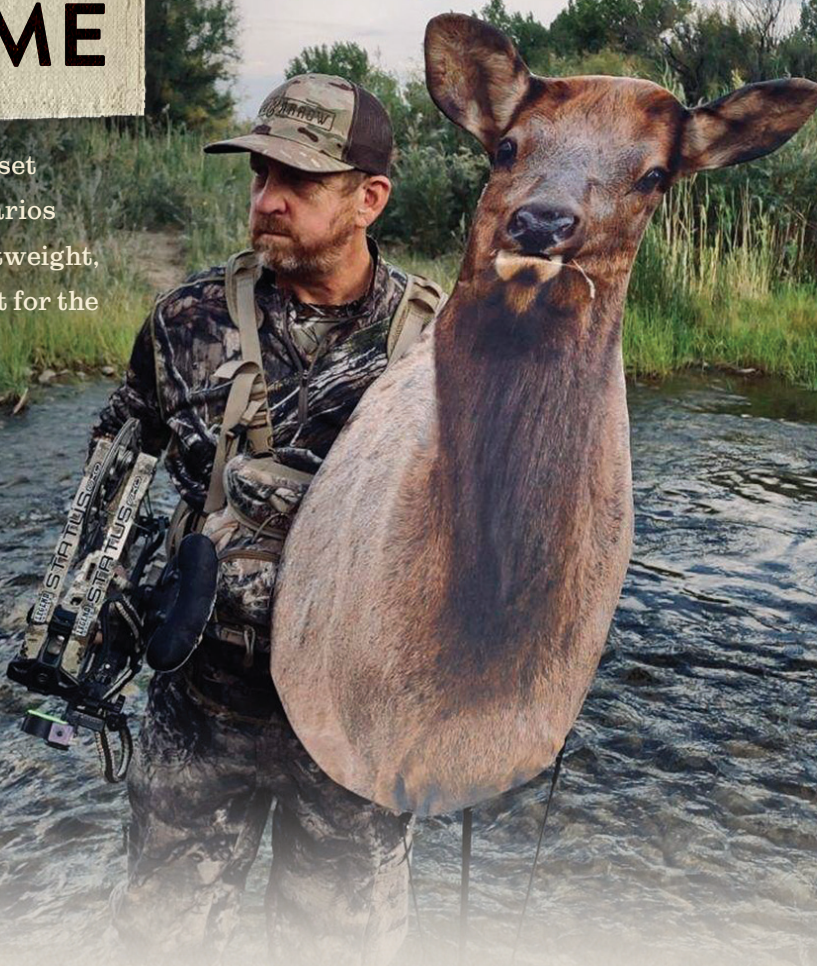
UNFOLDED: 24" x 10"

FOLDED: 10" x 5"



BIG GAME

Our big game decoys help hunters set up the most realistic decoy scenarios possible while on the move. Our lightweight, packable big game decoys are a must for the backcountry bowhunter.



FLASHER ELK

The all-new Flasher does exactly what its name implies - flashes a bull elk by appearing then disappearing quickly, a behavior that will entice him to come in for a closer look. Designed to be easy to carry and so lightweight you might forget you're carrying it, use the Flasher as a hand-held decoy (when you are certain there are no other hunters in your area), by hanging it from a tree, or mounting it to your bow quiver. It also works great when you're forced to move set up several times while working a bull. And set up time is virtually eliminated.

When we created this decoy, we were torn between calling it the Closer or the Flasher because it does both. You can flash it at a wary bull to close the deal! Use it alone or with any of our elk decoys.

- Built using a photo of an actual cow elk.
- Can be hung, held, or staked
- Lightweight and easy to pack

NEW
for
2025

WEIGHT: 1 lb 1 oz (with poles)

UNFOLDED: 42" x 20"

FOLDED: 18" x 13"

PART#	UPC
0088	851234000881



weighs
just
8.5
ounces

BACKCOUNTRY ELK

Ultra light and designed for the backcountry hunter looking to cut weight from their pack. Can be used with or without aluminum leg pole. The double-sided cow rump can be used for sneaking or standalone.

- Lightweight aluminum leg pole with steel tips for use in hard ground

PART#	UPC
0078	851234000782

WEIGHT: 8.5 oz (with pole)

UNFOLDED: 21" x 43"

FOLDED: 9" x 9"

Swap out the leg pole for your trekking pole to save even more weight.

(Trekking pole not included)



RMEF COW ELK

Big bulls can't resist the tempting look of the RMEF Cow Elk decoy. It's the most detail and definition ever in an elk decoy.



- Larger size allows for better visibility to approaching elk
- Partnered with Rocky Mountain Elk Foundation

PART#	UPC
0064	851234000645

WEIGHT: 42 oz (with poles)

UNFOLDED: 48" x 50"

FOLDED: 17" x 15"



EICHLER ELK

Fred Eichler

SIGNATURE SERIES

If anyone knows Elk, it's Fred Eichler. This elk decoy was designed by him from the strings down to be realistic, mobile and usable all season long. Set up with leg poles or string hanging system.

- Looking pose designed to catch and hold a bull's attention
- HD printed for ultra-realism

PART#	UPC
0041	851234000416

WEIGHT: 40 oz (with pole)

UNFOLDED: 40" x 38"

FOLDED: 19" x 12"



MISS SEPTEMBER

In hard-hunted areas or late season situations, a feeding pose can be the perfect addition to any setup. It calms wary bulls and the feeding urge gives that shy bull a reason to approach outside the rut.

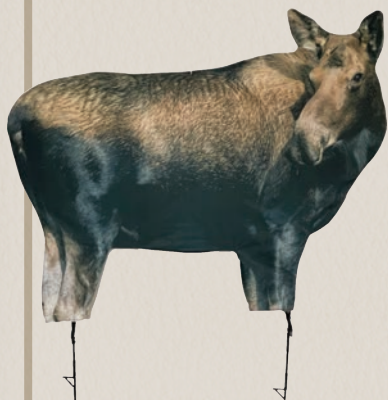
- Steel tipped leg poles for use in hard ground
- Double sided

PART#	UPC
0034	851234000348

WEIGHT: 33 oz (with poles)

UNFOLDED: 60" x 47"

FOLDED: 22" x 13"



MOOSE II *UPDATED*

The result of countless conversations with guides and outfitters, the Moose II decoy is ready to help you capitalize on that once-in-a-lifetime wilderness hunt.

- Twist folds to an easy-to-carry 23"x40" package
- Built using an actual moose photograph

PART#	UPC
0039	851234000393

WEIGHT: 48 oz (with poles)

UNFOLDED: 59" x 40"

FOLDED: 23" x 25"



BESSIE MOO COW

A new design on an old favorite, the head on Bessie is built to move forward with cover. Use it as a decoy or stalking shield, it's equally effective on any game that shares space with cattle.

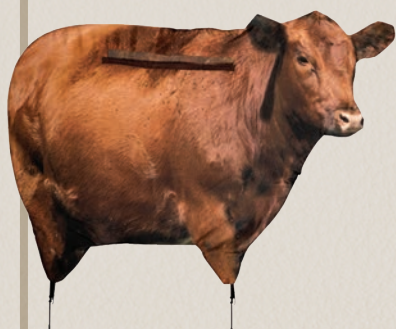
- Great for big game, waterfowl or predators
- Stalking friendly handles

PART#	UPC
0081	851234000812

WEIGHT: 43 oz. (with poles)

UNFOLDED: 32" x 50"

FOLDED: 12" x 24"



BIG RED MOO COW

No matter if you call it a stalking shield or a confidence decoy, this cow works across the country and during any part of the season.

- Great for big game, waterfowl or predators
- Special view-through mesh and stalking handles

PART#	UPC
0051	851234000515

WEIGHT: 48 oz (with poles)

UNFOLDED: 56" x 42"

FOLDED: 19" x 19"



ANTELOPE BUCK & DOE COMBO

The Antelope Buck and Doe combo gets you set up for any antelope decoying situation you may find yourself in.

- Easy to transport and set up
- Great for spot-and-stalk or blind hunting

PART#	UPC
0083	851234000836

WEIGHT: 28 oz (with poles)

UNFOLDED: 38" x 30"

FOLDED: 13" x 10"

WEIGHT: 26.5 oz (with poles)

UNFOLDED: 29" x 34"

FOLDED: 9" x 12"



EICHLER ANTELOPE WITH QUICKSTAND

When noted hunter, outfitter and writer Fred Eichler wants a decoy, he reaches for a Montana Decoy. He likes them so much he worked hand-in-hand with us to design his signature antelope decoy:

- Special view-thru mesh and stalking handle
- Includes Quickstand for ease of use

PART#	UPC
0052	851234000522

WEIGHT: 31 oz (without stand)

UNFOLDED: 48" x 27"

FOLDED: 12" x 12"



ANTELOPE BUCK

Great for spot-and-stalk or water hole setups, Montana's Antelope Buck decoy is lightweight, easy-to-pack Pronghorn poison.

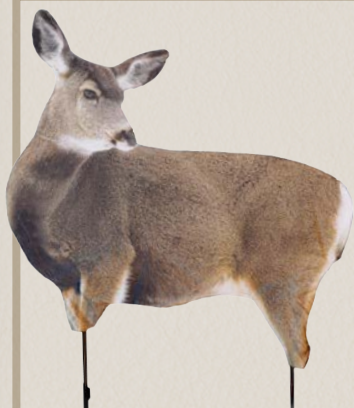
- Built using an actual Pronghorn Buck photograph
- A must for any Pronghorn hunt

PART#	UPC
0003	851234000034

WEIGHT: 28 oz (with poles)

UNFOLDED: 38" x 30"

FOLDED: 13" x 10"



MISS MULEY

Use Miss Muley to get the attention of rutting mule deer bucks looking to add does to their harem or create confidence any time during the season.

- Great for an early season confidence decoy
- Lightweight and extremely packable

PART#	UPC
0065	851234000652

WEIGHT: 1 lb 14 oz (with poles)

UNFOLDED: 40" x 38"

FOLDED: 14" x 15"



MULEY BUCK

The Muley Buck makes a great addition to your mule deer hunting gear. The posture and size is set to attract bucks and does of all ages and sizes. No matter if you are a very mobile hunter or you like to stay put, the Mule Deer buck can help you find success.

- Lightweight making it easy to carry
- Quick set up and take down
- Can be paired with Miss Muley doe (not included) for an all season mule deer hunting plan

PART#	UPC
0049	851234006492

WEIGHT: 2 lbs 7.5 oz

UNFOLDED: 44" x 48"

FOLDED: 20" x 18"

ACCESSORIES



DECOY CARRIER

The Decoy Carrier is a simple way to pack one or more decoys quickly and quietly. Larger than the original, it's easier to put our larger big game decoys in or even the Purrfect series of turkey decoys.

- **NEW!** Larger size to fit our bigger decoys
- Quiet to use and transport
- Keeps leg poles and decoys together

SKU#	UPC	WT.
0012	851234000126	10 oz

WEIGHT: 10 oz

SIZE: 15" x 15"

TEASER TAIL

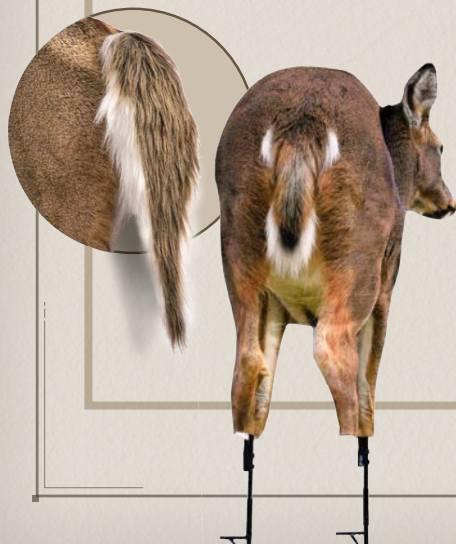
Give any Montana Decoy deer motion and realism, simple to attach and replaceable to allow scent application to tail instead of decoy.

- Attached securely with magnets
- Can easily be trimmed to match decoy

SKU#	UPC	WT.
0074	851234000744	1 oz

WEIGHT: 1 oz

SIZE: 4" x 14"



TIPUP STAND



The perfect addition for a treestand hunter. The TipUp stand lets you keep your decoy hidden until you want it seen. Why attract and hold bucks you don't want to shoot. More eyes and noses mean more problems. In the right situations the TipUp stand lets you remain totally unheard and unseen until time to strike. Packable for transport and simple set up. No batteries, just simple and easy to use.

- Telescopes from 19.5" to 26.5"

Compatible with our full-body Big Game and Deer Decoys.

SKU#	UPC	WT.
0050	851234000501	<2 lbs

QUICK STAND

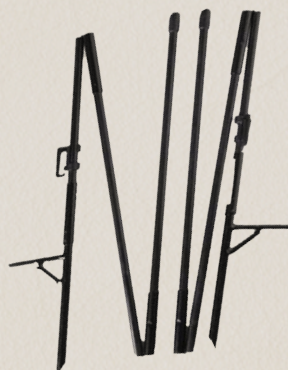


Set up decoys quickly, easily and with less hassle using the QuickStand. The large platform allows hunters to stake decoys into the ground with one foot. The cable toe-loop makes removing the decoy from the ground almost effortless. Spot-and-stalk hunters will love that adding the Quickstand to a Montana Decoy will allow holding the decoy in one hand while calling or using a rangefinder with the other.

Compatible with our full-body Big Game and Deer Decoys.

SKU#	UPC	WT.
0057	851234000577	<2 lbs

DECOY STAKES



Decoy Stakes, Leg Poles, or just poles... It doesn't matter what you call them —sometimes you just lose them. Order another set for your decoy and get back in the field. If you're looking for the most weight savings possible, check out our Aluminum leg pole options.

- Steel tip to set up in tough conditions.
- Available for most of our Big Game Decoys

MontanaDecoy.com

